

# Nittany Mineralogical Society Bulletin

Nittany Mineralogical Society, Inc.  
P.O. Box 10664

State College PA 16805

Editor (see page 4):

David C. Glick

September, 2012

Visit our web site: [www.nittanymineral.org](http://www.nittanymineral.org)

September 19th meeting:

## Roadside Geology

### Part 1: Pennsylvania

by Dr. Charles E. Miller, Jr.  
Retired Geologist

*Our September meeting will be held Wednesday the 19th in the room 114 auditorium of Earth & Engineering Sciences Building on the west side of the Penn State campus in State College, PA. Maps are available through our web site.*

*6:30 to 7:30 p.m.: Social hour, refreshments in the lobby*

*7:30 to 8:00 p.m.: announcements, questions, answers;  
door prize drawings*

*about 8:00 p.m.: featured program*

*The event has free admission, free parking, and free refreshments, and is open to all – **Bring your friends and share an interesting evening.***

In 1972 Mountain Press Publishing Company began the popular Roadside Geology book series. Professional geologists write and edit the books for people who are not geologists but who would like to learn something more about roadcuts, vistas, and exposures along roads. This talk is an extension of that theme and begins locally and expands outward from State College. Each locality is discussed briefly without technical jargon so as to keep with the theme of providing information for non-geologists. Seeing these localities through the eyes of a geologist will be informative and, hopefully, interesting.



Thrust faulted anticline; Charlie Hill road-cut; Rt. 22; ~ 8 mi. north of Huntingdon; between Huntingdon and Water Street, PA; 2-1999. (1985, Central Pennsylvania Geology Revisited, Guidebook for 50<sup>th</sup> Annual Field Conference of Pennsylvania Geologists, pp. 192-203) (Image by the author).

Local and nearby geology provides a wide variety of features, including solution along bedding planes, cross sections of sinkholes, folds, faults, spheroidal weathering,

*Continued with more photos on page 2*

## Junior Rockhounds Meet Sept. 19th

Junior Rockhounds will meet at 5:00 p.m. on the third Wednesday of September and October, the fourth Wednesday of November (the 28<sup>th</sup>), with December plans to be announced later. Those are the same nights as our regular meetings; this month it's September 19th. We'll meet in room 121 Earth & Engineering Sciences Building; from the parking lot, enter the lobby, take the hallway on the left and go all the way to its end.

Each month's Junior Rockhounds meeting has a new topic or topics with fun, hands-on learning for the kids. We encourage those who attend to become NMS members, but it's not required. Just \$7.00 covers a whole year (through October 2013) of student membership. Parents may get a lot out of the meetings, too! Check the web site for news, or contact Dr. Andrew Sicree (see page 8). - Editor

### ATTENDING THE SEPTEMBER MEETING?

Donations of **door prize specimens** are invited.

NMS will provide ice and drinks;  
your donated snacks will be welcomed.

Bring a friend!

### Coordinators Needed for Meeting Refreshments, Door Prizes

If you attend our meetings regularly, please volunteer to help with organizing our refreshments (NMS will pay the bill) or storing & transporting a few "grand" door prize specimens. Your help would be appreciated! - Editor

### Dues are Due!

by David Glick, NMS President

Our membership year ends in just six weeks, so it's time to pay dues. For current members, a form is enclosed; the form and payment can be mailed in or brought to our September meeting. Your **prompt payment helps a lot** in reducing work for our volunteer staff. The rate remains at \$20 for an individual member, with other options available. Forms may also be downloaded from our web site.

The dues form now includes a line for "don't send a printed Bulletin." If you read the Bulletin on the web site anyway, you can help reduce our printing and mailing expenses by checking this line. You can go back to the printed version, or request individual printed issues, at any time.

### More News inside

Elections & Annual Meeting October 17      page 2  
Interested in a Philadelphia Museum Trip?      page 3  
NMS at Harvest Festival in Houserville      page 3



## Roadside Geology Continued

tidal-flat deposits, bedding conducive to slope failure, primary sedimentary features (ripples, mudcracks, intraformational conglomerate, abandoned stream channels, cross bedding), sandstone used in the Hubble Telescope's mirror, an excellent fossil locality, the largest fossil sponges in Pennsylvania, cave formations on a bridge, periglacial features, mass wasting, and much more. Of special note will be stops at the Giant Food Store on Atherton Street, the clay courts at the Penn State Tennis Center, and some building stones at University Park.

Beyond State College, our traverse in Pennsylvania expands to Altoona, Hollidaysburg, Bellwood, Water Street, Spring Mills, Castanea, Williamsport, Renovo, Lewistown, Towanda, Swatara Gap, Chambersburg, Carlisle, Gettysburg, and Pittsburgh. Localities beyond Pennsylvania will be covered in future talks.



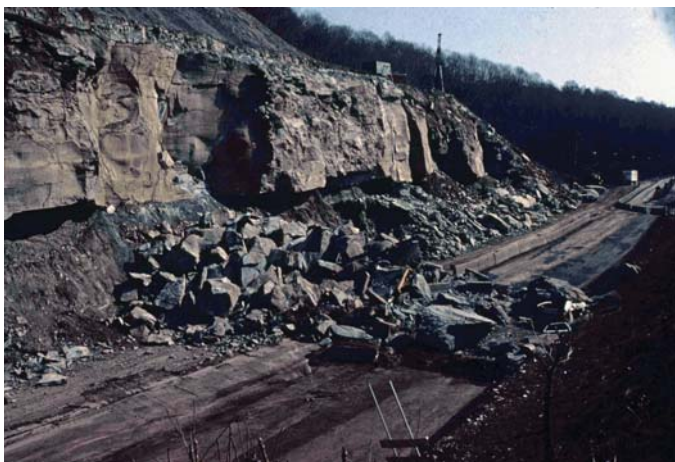
Route 322 at the intersection with Route 26 (State College, PA), exposing repetitious strata of limestones and dolomites; 2010. (image by the author)



Normal fault in the Gatesburg Formation, exposed during construction of the I-99 Scotia interchange; 12-22-2001. (image by the author)



Diabase dike (dark) intruding Cambro-Ordovician limestone (light colored, at left and right sides); (Old) Exit 16 of PA Turnpike (I-76); Carlisle, PA; 1974. During late Triassic and, mostly, Jurassic time, diabase followed deep-seated fractures associated with the rifting of Pangaea.



Rockfall, Saw Mill Run Boulevard, Pittsburgh, PA; 2-16-1983. After minor blasting, 400 tons of sandstone which had been overhanging an eroding soft layer of shale fell, killing two people.

## Annual Meeting and Elections in October:

### Report of the Nominating Committee

by David Glick, NMS President

Notice is hereby given that the October 17<sup>th</sup> meeting will be the **Annual Meeting of the Corporation**, and will include election of officers. In accordance with our bylaws, the Board of Directors, acting as the Nominating Committee, announces the following slate of candidates. No other volunteers or nominations have been received, and these incumbents have agreed to serve again:

President: David Glick

Vice-President: Robert Altamura

Treasurer: John Passaneau

Secretary: Ellen Bingham

Any additional nominations or volunteers for the elected positions should be made as soon as possible. The Board again requests additional volunteers to get involved with running the Society, providing **new energy and fresh thinking**. In many

cases it would be useful to have newcomers spend some time on committees and attending Board meetings before stepping into elected office. All members: please consider volunteering! We could use help in organizing door prizes, refreshments, publicity, the Bulletin, and more. Members are invited to attend Board meetings (generally held on the first Wednesday of the month at 7:30 p.m.), to see how we operate.

**Possible Philadelphia Academy of Natural Sciences Museum Visit & Tour**

NMS members have been invited to tour the collections, including a behind-the-scenes visit. It would have to be on a weekday. If you have **any** interest and might be available, contact Dave Glick (see p. 4), and the Board will investigate further. *- Editor*

**NEWS FROM THE FEDERATIONS**

Nittany Mineralogical Society, Inc., is a member of EFMLS, the Eastern Federation of Mineralogical and Lapidary Societies, and therefore an affiliate of AFMS, the American Federation of Mineralogical Societies. We present brief summaries here in order to encourage readers to see the entire newsletters.

The **EFMLS Newsletter** is available through the link on our web site [www.nittanymineral.org](http://www.nittanymineral.org) or remind Dave Glick to bring a printed copy to a meeting for you to see. The September issue starts with the final invitation to attend the EFMLS Convention and Show, "Crystals: Flowers of the Mineral Kingdom," in Harrisburg. The final part of the slate of candidates for election at the convention is presented. Gifts to the Eastern Foundation Fund are invited. The safety article is about protecting our hearing; we already know that loud noise can damage hearing, but new research may show that constant low-level noise can cause damage as well. Ellery Borow says "please" nominate the most helpful club members for Club Rockhound of the Year. EFMLS participants and winners in competitions at the AFMS convention are reviewed. Start thinking now about attending Wildacres workshops next spring or fall.

The **AFMS Newsletter** is available by the same methods. The September issue opens with the 2012 Recognition Award going to Anne Cook. President Lauren Williams reminds us that the best way to reach some people is still with paper - printed bulletins, printed flyers about meetings and shows, etc. President-elect Don Monroe introduces himself and his interests, including silver jewelry, Appalachian cooking, black smithing and knife making. Photographs (see page 16 for agate photos), minutes, competitive exhibit trophy winners, and the Endowment Fund raffle results from the annual meeting in Minnesota are presented. Web site contest results are listed. Several Club Rockhounds of the Year are introduced, and the many categories of Bulletin Editor's contest are listed.

Please see the web sites for the complete Newsletters. There's a lot there! *- Editor*

**NMS LAPIDARY EDUCATIONAL BOOTH AT HARVEST FESTIVAL IN HOUSEVILLE**

Sunday, September 30, 2012 - 4-6 pm

by Bob Altamura

Club members Bob Altamura and John Passaneau will host an educational station on Lapidary (mineral & rock carving and polishing) at the Fall 2012 'Harvest Festival' to be held at the Houserville School grounds on the east side of State College, PA. The festival is considerably family and children oriented. Visitors will have an opportunity to view, examine and discuss a variety of popular lapidary rocks (rough and slabs). These lapidary materials will include: a wide variety of multi-colored jaspers, tiger eye, a wide variety of agates, amethyst, chert, and many more – including our local gemstone: "the State College oolitic chert."

A mechanized lapidary grinding wheel and a rotary tumbler will be displayed, and periodic demonstrations of grinding and polishing gems will offered during the Fair. Finished gemstones and completed examples of jewelry will be exhibited. Souvenir tumble-polished gemstones with mineral and rock information and the Nittany Mineralogical Society web site address will be given to visitors.

The Harvest Festival is sponsored by the Houserville-Lemont Parent-Teachers Organization (PTO). Check out <http://www.scasd.org/Page/14875> for details, updates and registration information for the Harvest Festival.

**Geo-Sudoku**

by David Glick

This puzzle contains the letters EHIKLNOSZ, and one row or column includes a karst feature which will be mentioned in our September program. Each block of 9 squares, each row, and each column must contain each of the nine letters exactly once. The solution is on page 8.

			Z					
N	L	K	E					
		I	N	K	H			
I				H		L		
O		N			L			S
				N		E		
					I		H	K
		S						L
	Z						N	



## Some Upcoming Shows and Meetings

Our web site <http://www.nittanymineral.org> has links to more complete lists and details on mineral shows and meetings around the country.

**Sept 14-16, 2012, Eastern Federation** of Mineralogical and Lapidary Societies Convention, and Central Pennsylvania Rock and Mineral Club Annual Show, Harrisburg. See our August issue..

<http://www.rockandmineral.org/annualshow.htm>  
<http://www.amfed.org/efmls/conventionp.htm>

**Sept 29-30, 2012, Franklin - Sterling Hill Mineral, Gem & Jewelry Show**, by FORMS and Franklin Mineral Museum, New Jersey, at Franklin Borough School, 50 Washington Avenue.

**October 6, 2012:** Autumn Mineralfest by PESA, at Macungie Memorial Park, Poplar Street, Macungie, PA. Saturday only, 8:30- 3:00. <http://www.mineralfest.com/>

**October 27, 2012:** South Penn Rock Swap - AUTUMN SWAP by Franklin County & Central PA Rock and Mineral Clubs. South Mountain Fairgrounds, 1.5 miles West of Arendtsville, PA on Route 234. Sat only, 8 a.m. to 3 p.m.

**October 27, 2012:** "Ultraviolation" Fluorescent Mineral Show, by the Rock & Mineral Club of Lower Bucks County. First United Methodist Church, 840 Trenton Rd, Fairless Hills, PA.

**November 3-4, 2012:** Friends of Mineralogy, PA Chapter Symposium and Field Trip, at Franklin & Marshall College, Lancaster, PA. <http://www.raslo.com/FM/>

**November 3-4, 2012:** Gemarama by Tuscarora Lapidary Society, at CFS The School at Church Farm, Exton, PA. <http://www.lapidary.org/GEMARAMA/Gemarama.html>



Geo-Sudoku Solution from page 3

H	O	E	Z	L	S	N	K	I
N	L	K	E	I	O	H	S	Z
Z	S	I	N	K	H	O	L	E
I	E	Z	S	H	K	L	O	N
O	H	N	I	E	L	K	Z	S
S	K	L	O	N	Z	E	I	H
E	N	O	L	Z	I	S	H	K
K	I	S	H	O	N	Z	E	L
L	Z	H	K	S	E	I	N	O

### For sale / trade:

will return after we update the listings.  
 Submissions are welcomed.

### INVITE A FRIEND TO JOIN THE SOCIETY

The Nittany Mineralogical Society prides itself on having among the finest line-up of speakers of any earth sciences club in the nation. Everyone is welcome at our meetings. If you'd like to be part of our Society, dues are \$20 (regular member), \$7 (student rate), \$15 (seniors), \$30 (family of two or more members, names listed). Those joining in March or later may request pro-rated dues. Your dues are used for programs and speakers, refreshments, educational activities, Bulletins, and mailing expenses. Please fill out a membership form (available at [www.nittanymineral.org](http://www.nittanymineral.org)), make checks payable to "Nittany Mineralogical Society, Inc." and send them to

Nittany Mineralogical Society, Inc.

P.O. Box 10664

State College, PA 16805

or bring your dues to the next meeting.

We want to welcome you!

### SOCIETY OFFICERS

David Glick (President) 814-237-1094 (h)

e-mail: [xidg@verizon.net](mailto:xidg@verizon.net)

Dr. Bob Altamura (Vice-President) 814-234-5011 (h)

e-mail: [raltamur@fscj.edu](mailto:raltamur@fscj.edu)

John Passaneau (Treasurer) 814-231-0969 (h),

e-mail: [jxp16@psu.edu](mailto:jxp16@psu.edu)

Ellen Bingham (Secretary) e-mail: [emb22@psu.edu](mailto:emb22@psu.edu)

### OTHER CONTACTS

Field Trips: Ed Echler 814-222-2642

e-mail preferred: [eechler@comcast.net](mailto:eechler@comcast.net)

Junior Rockhounds: Dr. Andrew Sicree

814-867-6263 (h) e-mail: [sicree@verizon.net](mailto:sicree@verizon.net)

Membership Chair: David Glick (see above)

Programs: Dr. Duff Gold 865-7261(o), 238-3377(h)

e-mail: [gold@ems.psu.edu](mailto:gold@ems.psu.edu)

Door Prizes: *volunteer needed!*

Facebook: Mike Zelazny e-mail: [maz166@psu.edu](mailto:maz166@psu.edu)

The **Bulletin Editor** will welcome your submissions of articles, photos, drawings, cartoons, etc., on minerals, fossils, collecting, lapidary, and club activity topics of interest to the members. Please contact:

David Glick E-mail: [xidg@verizon.net](mailto:xidg@verizon.net)

209 Spring Lea Dr. phone: (814) 237-1094 (h)

State College, PA 16801-7226

Newsletter submissions are appreciated by the first Wednesday of the month. If you include photographs or graphics, please do not embed them in word processor files; send them as separate graphics files (TIF, or good to highest quality JPEG files, about 1050 pixels wide, are preferred). Please provide captions and name of photographer or artist.

Visit us at [www.nittanymineral.org](http://www.nittanymineral.org)