

Nittany Mineralogical Society Bulletin

Nittany Mineralogical Society, Inc., meeting in State College, Pennsylvania
Contact information on back page

September, 2022

Visit our web site: www.nittanymineral.org

Editor (see back page):

David C. Glick

September 21st meeting,
IN PERSON at BOAL HALL or via ZOOM:

Flint Knapping 101 by Ken Burton

Our September meeting will be held Wednesday the 21st in Boal Hall (Boalsburg Fire Hall), 113 East Pine St., Boalsburg, PA 16827. Maps can be found on our web site.

7:15 to 7:45 p.m.: Social "hour." We will serve some refreshments - snacks and a few beverages - or feel free to bring your own non-alcoholic beverage.

7:45 to 8:00 p.m.: Announcements, door prizes, sales
about 8:00 p.m.: featured program

The event has free admission and free parking (lot just east of Fire Hall along East Pine St.), and is open to all; **parents/guardians must provide supervision of minors.** Bring your friends and share an interesting evening.

We hope you will join us in person, but if you can't, the

Zoom link will be e-mailed to all paid members who receive our e-mails. Others are welcome to request it by e-mailing <xidg@verizon.net>. We plan to record the presentation for later posting to our web site. -Editor

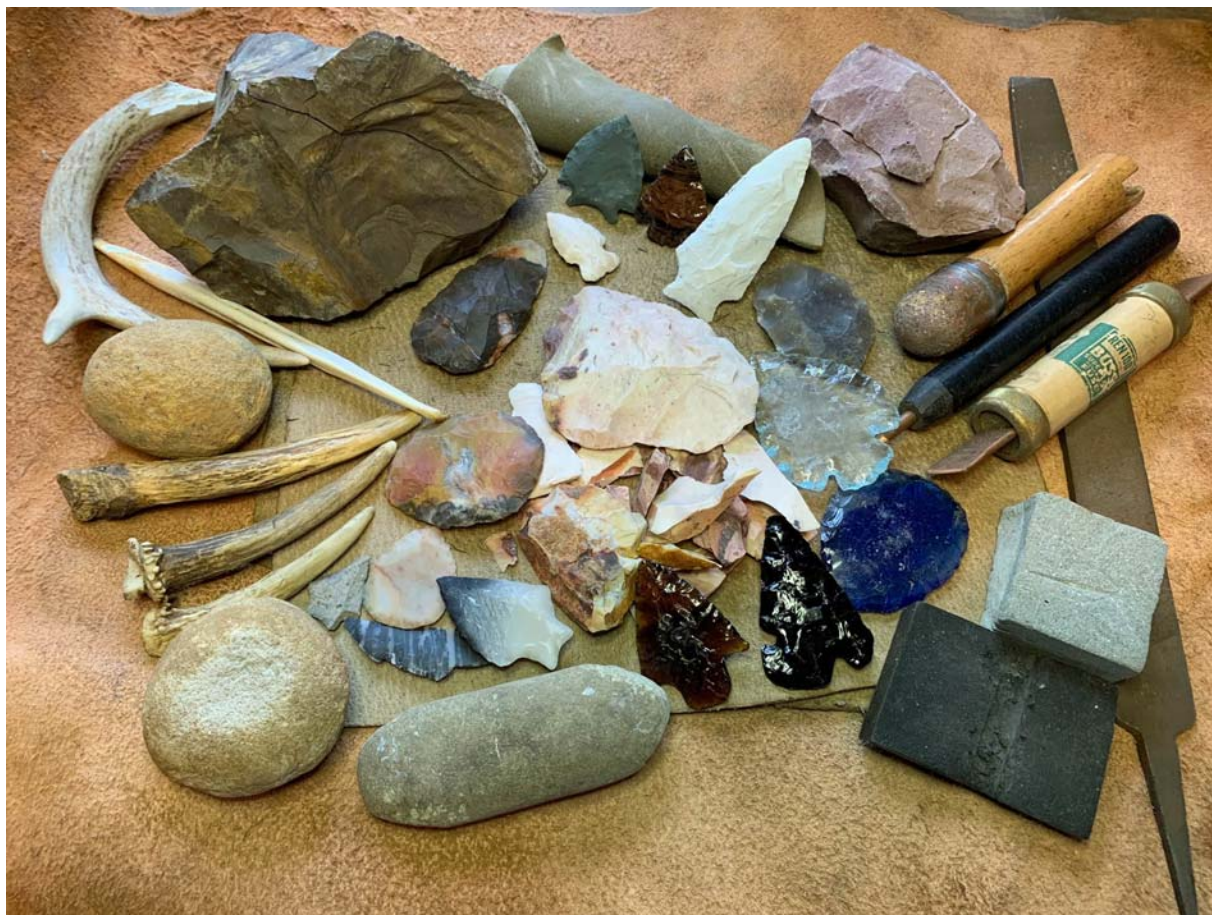
Indigenous people have roamed the North American continent for thousands of years, leaving behind utilitarian and ornamental artifacts that are valued for their antiquity, natural beauty and craftsmanship. During the late 1800's and 1900's, "treasure hunting" of Native American artifacts became fairly common either in the form of excavating known sites or surface hunting in plowed fields and along waterways. Hundreds of thousands of artifacts have been collected, making new finds more rare.

Late 20th century laws and farming method changes have also made it more difficult to search and find additional relics of the past. Consequently, many former surface collectors have turned to the hobby of flint knapping. Flint knappers continue the art of chipping stone in the form of projectile points, tools and ornaments. Gatherings of flint knappers (knap-in) occur annually throughout the U.S. In addition to flint knapping, these events include the trading,

buying and selling of stone materials and crafted items, as well as various demonstrations and competitions free to the public. <https://flintknappers.com/events>.

I was one of those individuals fascinated with surface hunting artifacts in plowed fields. I met others with the same interest, which eventually led to my attendance at a local knap-in. I have learned the basics to make some points and will share this knowledge at the meeting.

✧



From the past into the present, rock to blade.

Ken Burton photo.

OFFICIAL NOTICE: Annual Meeting and Elections in October

by David Glick, NMS President

The October 19th meeting, to be held at Boal Hall in Boalsburg, will be the **Annual Meeting of the Corporation**. Business will include election of officers. In accordance with our bylaws (available on the web site), the Board of Directors, acting as the Nominating Committee, met in August and nominated the following slate of officers:

President	David Glick
Vice President	Bob Altamura
Treasurer	Stuart Bingham
Secretary	Barry Scheetz

The Board truly needs **additional volunteers** to get involved with running the Society, providing **new energy and fresh thinking** and some new names on the ballot. In many cases it would be useful to have newcomers spend some time on committees and attending Board meetings before stepping into elected office. **All members: please consider volunteering!**

DUES Time Once Again

Our membership year ends on October 31. For NMS members, a dues form is included with this issue, either on paper or electronically. The form is also available on our web site at <http://www.nittanymineral.org/mem.htm>. If you bring your dues and form to the September meeting, or send them in during September, we won't need to send another form to you in October. Your dues are used for programs and speakers, refreshments, educational activities, Bulletins, and mailing expenses. We look forward to your continuing membership!

Penn State Earth & Mineral Sciences Museum Open Home Football Saturdays

Penn State's Earth & Mineral Sciences Museum & Art Gallery re-opened to the public over the summer after a renovation of its space on the ground floor of Deike Building.

Fall hours began on August 22; they are:
M, W, F 10:00 a.m. - 4:00 p.m. and
T, Th 10:30 a.m. - 4:30 p.m.

The Museum plans to be open on home football game Saturdays. If the game is scheduled for noon or early afternoon, open hours will be 9:00-11:00 a.m. If the game is scheduled for evening, hours will be 2:00-4:00 p.m. Check <https://museum.ems.psu.edu/visit/location-and-hours> as game times are announced or changed. *-Editor*

Hubert L. Barnes, 1928-2022

Dr. Hu Barnes, 94, Penn State Distinguished Professor Emeritus of Geochemistry, died August 3, 2022. An extensive obituary appeared in The Centre Daily Times on August 28, and is available online.

He joined the Penn State faculty in 1960, eventually becoming Distinguished Professor, and supervising many graduate and post-doctoral students. He was also Director of the Penn State Ore Deposits Research Section (1969-1997) and was best known for research on sulfide minerals.

In matters more closely related to our club and mineral collecting, Hu served for many years on the Advisory Board for the College of Earth and Mineral Sciences Museum and Art Gallery. Hu and his late wife Mary made significant donations to help the Museum in its mission. He attended NMS meetings and provided many astute comments from an expert's perspective.

A memorial celebration of Dr. Barnes's life is planned in September. NMS extends our sincere sympathies to the family.

Thomas D. Fonda, 1934-2022

Tom Fonda, 87, died August 23, 2022. He was married to NMS member Dr. Shirley Fonda for 65 years. An extensive obituary appeared in The Centre Daily Times on September 4, and is available online.

Tom was a guidance counselor in State College schools. Outside of work he was a Boy Scout leader and a violinist, among many other interests. Tom and Shirley took the family to many mineral collecting and geological sites around the country during summer travels.

A memorial service is planned for a later date. NMS extends our deepest sympathies to Shirley and the rest of the family.

ATTENDING THE SEPTEMBER MEETING?

Donations of **one or two high quality, labeled door prize specimens** are invited.

Larger quantities can go in a giveaway box.

Bring a friend!

Central Pennsylvania Rock and Mineral Club 56th Annual... Gem, Mineral and Jewelry Show!

Saturday, September 24, 2022 10 AM - 6 PM

Sunday, September 25, 2022 10 AM - 4 PM

at the Harrisburg Consistory, 2701 N. 3rd Street
(Uptown Harrisburg, next to Zembo)

Harrisburg, PA 17110

Free off-street parking!

The Gem, Mineral and Jewelry Show is a great opportunity to see a variety of items from all over the world. You'll find Exhibits from local dealers as well as those who travel to the show from all over the country. Our rock show offers something for everyone, with everything from rough rocks and crystals to finished jewelry. Whether you're a beginner or an experienced collector, this is the perfect place to find what you're looking for!

Check out what you'll find at our rock show...

- Enjoy our Club member displays of rocks, minerals and fossils!
- Visit over 25 vendors of rocks, minerals and jewelry!
- Join in the Silent Quarter Auction- auctions every quarter hour in increments of just a quarter!
- Let the kids play in the Kids Area with a 25¢ wheel of rocks, plus free kids mini-mine and other activities!
- Enter into our Free prize drawing and you could win goodies from our vendors!
- Expand your mind with educational mineral and fossils displays!
- Relax and have lunch or refreshments in the cafeteria!
- Have fun with the Free presentations by Jeri Jones!
- Enjoy Free off-street parking in the lot across the street!
- General Admission only \$6, Kids 12 and under- FREE!
Scouts in uniform are free!

We can't wait to see you there! Learn more at

<https://rockandmineral.org/annual-show/>

EFMLS Convention at Harrisburg Show

The June EFMLS Newsletter, available on the NMS web site, has the schedule and descriptions of the various activities for the EFMLS Convention in Harrisburg. It is being held in conjunction with the Central Pennsylvania Rock and Mineral Club's annual show, which is Saturday and Sunday, September 24-25. Friday the 23rd will include the Cracker Barrel discussion session and the Annual Meeting of the Federation; those and most convention events are at the Penn Harris Hotel, 1150 Camp Hill Bypass, Camp Hill, PA 17011. The Show and some convention activities are on Saturday and Sunday.

The schedule at the Show venue (Harrisburg Consistory, 2701 N. 3rd Street, [beside the Zembo Shrine], Harrisburg, PA 17110) is:

SATURDAY Sept. 24:

- Central Pennsylvania Rock & Mineral Club Annual Show – 10:00 a.m. to 6:00 p.m.
- EFMLS Auction at the show venue – 1:30 p.m.

SUNDAY Sept. 25:

- Show – 10:00 a.m. to 4:00 p.m.

FEDERATION NEWS

Nittany Mineralogical Society, Inc., is a member of EFMLS, the Eastern Federation of Mineralogical and Lapidary Societies, and therefore an affiliate of AFMS, the American Federation of Mineralogical Societies. The AFMS News is linked from our web site, <<http://www.nittanymineral.org>>, and can be found at <http://www.amfed.org/afms_news.htm> (although as of this writing that web site is temporarily unavailable). While the Eastern Federation is working on its web site, their newsletters are available on the NMS web site (linked from the left sidebar of the main page).

The AFMS June Newsletter is available on the web site. It includes proposed revisions to the AFMS Scholarship Foundation By-Laws and Operating Procedures. A possible "American First" is noted in the article about planning for collecting to be allowed in the new Mojave Trails National Monument in California.

The Eastern Federation June newsletter is available on the NMS web site. It includes information on the EFMLS Convention Sep. 23-25 in Harrisburg PA, printed at left. The President writes on the importance of volunteers, and on the importance of recording and preserving club history. It is noted that the 2023 Convention will be held in Syracuse, New York, in July, 2023 (the convention scheduled there for 2021 had to be held virtually). Contributions are invited for the AFMS Scholarship Fund for graduate students in the earth sciences, and the Fund's operation is described.

The July special issue provided updates on the convention.

The September issue includes a safety article (reprinted on page 4 of this Bulletin) and a President's Message encouraging participation. First Vice President Bill Stephens notes the many updates being made to the Federation web site, especially a portal which will allow clubs to update their own information on the site. He also notes the need for committee chairs and members, and "We need some young tech savvy folks to volunteer for communications/social media related service."

Safety Matters:**Safety Cost**

by

Ellery Borow

from EFMLS News 69:10, September 2022

What is the cost of being safe? Visited several stores recently and looked at the safety kits. They all looked quite nice in decorative plastic cases, metal with sealed lids, and cardboard boxes which held various assortments of basic supplies such as bandages, gauze, safety pins, ointments, swabs, adhesive tape, safety scissors, and a guide book of some sort.

Safety kits sometimes focus on target situations - kits for car or boat travel, kits for the great outdoors, or kits for home safety. One can also find specific medications for insect bites and stings, burns, abrasions, sun burns, etc.

The prices for most safety kits ranged from \$4.95 to over \$60.00 for the more complete kits in airtight sealed metal boxes with sturdy plastic carrying handles. In practice we have seen tool boxes, shoe boxes, paper and plastic bags, as well as "official" safety kits being used to transport safety supplies in the shop, home, car or field trip. The main point is that a safety kit can be had for very little money. For such little outlay, how can one afford not to have a safety kit available? With such affordability, why not have a safety kit available in the kitchen, shop, car, truck, office, on a hike, basement, and at a meeting place?

Considering the modest cost of safety kits, it is handy to have several. Some injuries respond favorably to quick attention. Having safety kits nearby can be advantageous. Take a burn for example - most people will immediately place a burn under cool water for a moment. Burns, however, can be deep so it is usually more effective to keep the area of the burn immersed in cool water for 3, 5, 10 or even 20 minutes to mitigate the worst of the effects of a burn. Though one should still seek professional medical attention if a burn is severe.

There is a power with having a safety kit at hand when needed. The power, among other things, is in saving money. Having a first aid booklet, knowing the procedures in the booklet (rather than getting familiar with them after the accident) and being familiar with the contents of the safety kit has the potential to save money. That said, it is still best to prevent an injury before it occurs, rather than have to treat it afterward.



Autumn Mineralfest

mineral, fossil, and gem show

Over one hundred tables loaded with minerals, fossils, crystals, geodes, gemstones, and gemstone jewelry from six continents and outer space

Saturday, 1 October 2022
8:30 AM to 3:00 PM

Macungie, Pennsylvania
Macungie Memorial Park – 50 N. Poplar Street

FREE ADMISSION
Rain or shine - Over 50 vendors indoors, outdoor tailgate section weather permitting
Family oriented - Younger attendees encouraged



Sponsored by the
Pennsylvania Earth Sciences Association
a 501(c)(3) nonprofit educational organization

PESA is a Lehigh Valley based group of mineral and fossil collectors, gemstone and lapidary artisans, and other earth science enthusiasts.



mineralfest.com



facebook

We replace the brake pads on a car before they fail, we repair a roof leak before the damage becomes an issue, we paint the wood before natural elements damage it, we prune the dead branch before it falls on the house. We are used to preventing damage before it occurs - we should try to do the same with our personal well-being. A safety kit can help with that.

Keeping with the car example - fixing the brakes can be far cheaper than being in a traffic accident later. Wearing safety goggles, gloves, study shoes, and otherwise being well prepared for a field trip can be well worth the cost of safety equipment and kit. The prices of being safe are many and varied - and well worth the alternative of being injured.

Please consider keeping a safety kit nearby because - Your safety matters.

Bucks County Minerals Book Published by Ron Sloto

THE MINES AND MINERALS OF BUCKS COUNTY, PENNSYLVANIA



RONALD A. SLOTO

The Mines and Minerals of Bucks County, Pennsylvania, a recently published book by Friends of Mineralogy - Pennsylvania Chapter member Ron Sloto, provides a comprehensive description of the mining history and mineralogy of the county. It pulls

together over 300 years of mining and mineral history under one cover. It is richly illustrated with 400 figures - old and new photographs, old maps, mine plans, and photographs of minerals from museum, university, and private collections. Many of the old photographs have never been published before. This book describes nearly 175 mines and mineral localities. It includes the known history of each mine and locality and a list of reported minerals. The locations are shown on a set of USGS topographic maps. Because many of the mines had several names over the course of their history, a comprehensive cross-index is provided. An extensive bibliography also is included.

Ninety-one different mineral species have been reported from Bucks County. Extensive coverage is provided for the two most prolific mineral localities in the county-the New Galena lead mines in New Britain Township and Vanartsdalen's quarry in Lower Southampton Township. Many of the past mineral industries in Bucks County, such as lime burning and production of paving blocks, are described.

The new book is available from Amazon.com [search Ronald Sloto] in paperback and hardcover. The "Look Inside" feature shows the Table of Contents and several pages typical of the illustrated content. Earlier books in this series are also available. See <https://www.amazon.com/s?k=ronald+sloto>



SYMPOSIUM & FIELD TRIP

Friends of Mineralogy - PA Chapter November 12-13, 2022 Lancaster, PA

Attend ONLINE -OR- IN PERSON at Bright Side Opportunities Center, 515 Hershey Ave., Lancaster PA 17603

Symposium for mineral enthusiasts on **Saturday Nov. 12** Doors open 8:30 a.m.; Symposium 9:00 - 4:15

Sales by Select Dealers – Silent Auction – Give-away Table – Meet Fellow Collectors

Talks by knowledgeable speakers on **Pennsylvania Mineralogy and Geology**, and more:

William Kochanov, PG	Stephen R. Lindberg	Ronald A. Sloto, PG	Bill Stephens, PG	and...
Pa. Geol. Survey, Retired Reconnaissance of mineral collecting sites in Southeastern Pennsylvania	U. Pittsburgh at Johnstown Geology of the New Paris Limestone Quarry, Napier Township, Bedford County, Pennsylvania	West Chester Univ. Classic Mineral Localities of Bucks County, Pennsylvania	Stephens Environmental Report on Re-opening the Mount Pleasant Mills, Snyder County, Pennsylvania, Wavellite Occurrence	One more great talk to be announced

Registration form on website. Register online or by mail (or on-site, cash/check only).

Current members \$ 15.00/person Non-members \$ 25.00 College Students free

Professional Geologists: Five Professional Development Hour credits available for full lecture attendance

Field Trip on Sunday Nov. 13 Mount Pleasant Mills, PA. Open only to symposium registrants. Register now!

Visit our web site for details, registration form, changes and updates: www.rasloto.com/FM

Door Prizes for the September Meeting



Fossil fish, probably Eocene Green River Formation, Wyoming. Donated by Betsy Suhey. *D. Glick photo.*



Polished geode half with matrix, locality unknown. Donated by Betsy Suhey. *D. Glick photo.*

25 Years Ago in NMS

In 1997, NMS was three years old and holding its second annual symposium on September 19, 20 and 21. At a Friday evening reception, Andrew Sicree spoke about the Earth & Mineral Sciences Museum’s mining art. On Saturday, the luncheon keynote speaker was Richard Hauck of Sterling Hill Mine & Mining Museum in New Jersey. Other speakers were Susan Eriksson, Jay Lininger, Ernest Carlson, Allen Heyl, Wolfgang Vogt, Art Rose, and Sandra Downs. The Sunday mineral collecting field trip made a swing from Milesburg to Warriors Mark and Roaring Spring, Pa. *-Editor*

Pennsylvania Geology Magazine Second Issue of 2022 available

Many of us remember Hurricane / Tropical Storm Agnes and its effects on Pennsylvania in June, 1972, fifty years ago this summer. In particular, the Pennsylvania Geological Survey was hit very hard by flooding of the Susquehanna River. The new issue (Vol. 52, no. 2, Summer 2022) of Pennsylvania Geology Magazine, from the Pennsylvania Bureau of Geological Survey, includes personal recollections by John H. Barnes, now retired, who worked at the Survey at that time.

A featured article discusses “The streets of Pittsburgh are paved with Loyalhanna Limestone.” A century ago, dimensioned “Belgian blocks” quarried to the south and east of Pittsburgh were used as long-wearing street pavers. Some such streets still exist, and are illustrated. The article discusses the geology and fossils of the Loyalhanna.

Finally, “New Analytical Geochemistry Instrumentation at the Pennsylvania Geological Survey—The Hitachi SU3900 Scanning Electron Microscope “ and the many capabilities of its four detectors are described and illustrated.

Pennsylvania Geology magazine is available from the Survey’s web site, linked from the left sidebar of the NMS home page <www.nittanymineral.org>. -Editor

Geo-Sudoku

by David Glick

This puzzle contains the letters ABEINPRSW. One row or column includes a collecting locality in Pennsylvania. If you’ve read this issue, you’ve seen it. Each block of 9 squares, each row, and each column must contain each of the nine letters exactly once. The solution is on page 8.

P		S		B	W			
R		B			I	W		
			P	A				
	P	A					W	R
	W		B		A	N		
		E	W					
W				I		A	R	N
		I		N	B	S		
			R	W	P	E	B	I

Friends of Mineralogy - Pennsylvania Chapter

<https://www.rasloto.com/FM/>

SYMPOSIUM ON PENNSYLVANIA MINERALOGY AND GEOLOGY

IN PERSON and ONLINE

Mineral Collecting Enthusiasts Meet and Learn

Symposium November 12, 2022 Field Trip November 13

Bright Side Opportunities Center, Lancaster, PA

Please Register in Advance

The Friends of Mineralogy - Pennsylvania Chapter will hold their 2022 Symposium and field trip on the second weekend in November. Mineral collectors in attendance on Saturday will check in at the Bright Side Opportunities Center, 515 Hershey Ave., Lancaster, PA 17603. Activities, including informative talks by knowledgeable speakers on minerals, geology and mining in Pennsylvania and beyond, are planned. Online attendance is also being planned. On Sunday, a field trip for those registered for the symposium will provide an opportunity for mineral collecting at National Limestone Quarry's Mount Pleasant Mills, PA, location. The field trip is open only to symposium registrants. Safety equipment will be required.

Speakers scheduled for Saturday, November 12:

William Kochanov, PG, Pennsylvania Geological Survey, Retired:

Reconnaissance of mineral collecting sites in Southeastern Pennsylvania

Stephen R. Lindberg, University of Pittsburgh at Johnstown:

Geology of the New Paris Limestone Quarry, Napier Township, Bedford County, Pennsylvania

Ronald A. Sloto, PG, West Chester University:

Classic Mineral Localities of Bucks County, Pennsylvania

Bill Stephens, PG, Stephens Environmental:

Report on Re-opening the Mount Pleasant Mills, Snyder County, Pennsylvania, Wavellite Occurrence

And one more talk to be announced.

All interested mineral collectors are invited to register and attend. As usual, a few invited mineral dealers will be present, and there will be a silent auction, give-away table, refreshments, and plenty of opportunities for visiting with fellow enthusiasts. Lunch is available at restaurants within short driving distance, and there is adequate parking. Please see the web site <https://www.rasloto.com/FM/> for any updates, details, and the registration form.

Dates: Saturday & Sunday, November 12-13, 2021

Location: Saturday, Nov. 12: Bright Side Opportunities Center, 515 Hershey Ave., Lancaster, PA 17603.

Sunday, Nov. 13: collecting trip to National Limestone Quarry at Mount Pleasant Mills, PA

Registration: \$25/person for non-members (or join for 2023 and get the member rate),

\$15/person for current FM-Pa members; free for college students; free for younger students.

Parents must provide supervision of minors.

Please register in advance, online or by mail; a form is available on the web site.

Professional Geologists: Five Professional Development Hour credits available for full lecture attendance.

Web Site: <https://www.rasloto.com/FM/>

Contact: e-mail: <bstephens@stephensenv.com>



Mt. Pleasant Mills wavellite.

Bill Stephens specimen & photo.

UPCOMING EVENTS

Confirm details of events before attending.
See other show calendar links on our web site.

Sep. 24-25, 2022: EFMLS Annual Convention and Central Pennsylvania Rock & Mineral Club Show. Harrisburg Consistory, 2701 N. 3rd Street (next to Zembo), Harrisburg PA 17110. See page 3 and <https://rockandmineral.org/annual-show/>

Oct. 1, 2022: Autumn Mineralfest, by PESA. Macungie Memorial Park, Macungie, PA. 8:30 a.m. to 3:00 p.m. See p. 4 and <http://www.mineralfest.com>

Nov. 12-13, 2022: FM-PA Symposium, Lancaster, PA (12th) and Field Trip (13th) See p. 5 and 7.

Geo-Sudoku Solution

P	I	S	N	B	W	R	A	E
R	A	B	E	S	I	W	N	P
N	E	W	P	A	R	I	S	B
S	P	A	I	E	N	B	W	R
I	W	R	B	P	A	N	E	S
B	N	E	W	R	S	P	I	A
W	B	P	S	I	E	A	R	N
E	R	I	A	N	B	S	P	W
A	S	N	R	W	P	E	B	I

NMS BOARD MEETING NOTICE

NMS members are invited to attend Board of Directors meetings, which are generally held at 7:30 p.m., early in the month or as decided by the Board, although we do not meet every month. The next date has not been set. Members who would like to attend should contact president David Glick to verify time and place; those who would like to have their discussion item placed on the agenda should contact him at least one week in advance of the meeting.

INVITE A FRIEND TO JOIN THE SOCIETY

The Nittany Mineralogical Society prides itself on having among the finest line-up of speakers of any earth sciences club in the nation. Everyone is welcome at our meetings. If you'd like to be part of our Society, dues are \$20 (regular member), \$7 (student rate), \$15 (seniors), \$30 (family of two or more members, names listed). Those joining in March or later may request pro-rated dues. Your dues are used for programs and speakers, refreshments, educational activities, Bulletins, and mailing expenses. Please fill out a membership form (available at www.nittanymineral.org), make checks payable to "Nittany Mineralogical Society, Inc." and send them in as directed, or bring your dues to the next meeting.

We want to welcome you!

CONTACT INFORMATION

mailing address:

Nittany Mineralogical Society, Inc.
c/o S. Bingham, Treasurer
145 Goddard Cir.
Penna. Furnace PA 16865

SOCIETY OFFICERS

David Glick (President) 814-810-2116 (h)
e-mail: xidg@verizon.net
Dr. Bob Altamura (Vice-President) 814-234-5011 (h)
e-mail: raltamura@comcast.net
Dr. Barry Scheetz (Secretary) 814-360-8241 (cell)
e-mail: se6@psu.edu
Stuart Bingham (Treasurer)
e-mail: sebing145@comcast.net

OTHER CONTACTS

Field Trips: Dale Kephart
e-mail: beckdale2@comcast.net
Junior Rockhounds: Dr. Andrew Sicree
814-867-6263 (h) e-mail: aas132@psu.edu
Membership Chair: David Glick (see above)
Programs: Dr. Duff Gold 865-7261(o), 238-3377(h)
e-mail: gold@ems.psu.edu
Door Prizes: Dr. Bob Altamura (see above)
Facebook & Publicity: John Dziak: jjd264@psu.edu

The Bulletin Editor will welcome your submissions of articles, photos, drawings, cartoons, etc., on minerals, fossils, collecting, lapidary, and club activity topics of interest to the members. Please contact:

David Glick E-mail: xidg@verizon.net
425 Armagast Rd. phone: (814) 810-2116 (h)
Bellefonte, PA 16823-9762

Newsletter submissions are appreciated by the first Wednesday of the month. Photographs or graphics are encouraged, but please do not embed them in word processor files; send them as separate graphics files (good to highest quality JPEG files, about 1050 pixels wide, are preferred). Please provide captions and name of photographer or artist.

Visit us at www.nittanymineral.org